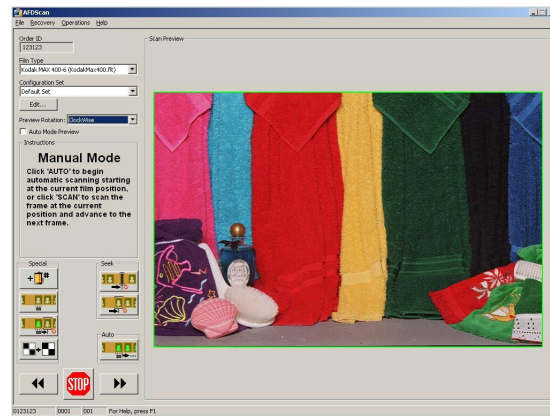


Punched film can also continue to be run by utilizing Kodak DP2 software and running the film from right-to-left.



## HR 500 Long Roll Auto-Frame Detection Upgrade Availability

Bremson is pleased to announce the availability of an Auto-Frame Detection upgrade for the KODAK HR 500 Long Roll Accessory. This upgrade will allow customers to scan long roll film without having to punch the film first. Thus, the entire film punching step can be eliminated in you lab workflow!

The upgraded Long Roll runs in auto-frame detection mode from left-to-right. Auto-frame detection is done using the included AFD Scan software that can be configured to automatically import image files, SBA data and order information text files into Kodak DP2 software. AFD Scan software includes a simplified user interface and error recovery.

Please refer to the matrix on the next page for a comparison of the features between the existing Long Roll Accessory and once the upgrade has been loaded.

The Auto-Frame Detection Upgrade includes the following:

- Over-night shipping of your Long Roll Accessory to our facility in Lenexa, Kansas
- Hardware modifications and complete re-testing of the upgraded Long Roll Accessory
- Scanner Mod Kit to modify 1 Kodak HR 500 family scanner
- Over-night return shipping of the upgraded Long Roll to your facility
- Labor to install the Scanner Mod Kit by a Kodak Field Engineer on you scanner at your facility
- AFD Scan software CD w/ User's Guide
- 90-day Service Warranty on upgrade components provided by Kodak
- Service coverage under your existing Kodak Accessory service contract (if applicable)

The Auto-Frame Detection Upgrade will be available in June for \$10,000.00 (order Bremson P/N P9305 through your Kodak Account Manager). Production will be done on a first com, first served basis and total production is limited so please place your order today!



# KODAK PROFESSIONAL HR 500 Long Roll Accessory

Feature	Current HR 500 Long Roll Accessory	Auto-Frame Upgrade
<b>Overview:</b>	For automatic handling of edited, master camera roll, and spliced rolls up to 61m (200 feet) long	For automatic handling of un-edited or edited, master camera roll, and spliced rolls up to 61m (200 feet) long.
<b>Host Software:</b>		
For Punched Film Scanning	DP2	DP2
For AFD Scanning	NA	Bremson Auto-Frame Scanning Application providing for auto import images into DP2
<b>Film Direction:</b>		
Punched Film Scanning	Either Direction: Left to Right or Right to Left	<b>Right to Left ONLY</b>
Auto-Frame Detection Scanning	NA	Left to Right
<b>Film Terms:</b>	Utilizes Kodak DP2 Film Terms	Utilizes Kodak DP2 Film Terms
<b>Film Sizes:</b>	35mm, 46m, 120 / 220, and 70 mm film formats	35mm, 46mm, 120 / 220, and 70 mm film formats
<b>Film Types:</b>		
Punched Film Scanning	All film types supported by the HR 500 Scanner	All film types supported by the HR 500 Scanner
Auto-Frame Detection Scanning	NA	Color Negative and Black & White Film Only Chromes TBD in a future software release
<b>Transport configuration options</b>		
punched film	Yes	Yes
notched film	Yes	Yes
camera cards	Yes	No for AFD
chromes	Yes	No for AFD
Increment Roll Number at Splice		customer selectable (Y/N)
Reset Frame to 1 On Roll Increment		customer selectable (Y/N)
Write Image Data to DP23		customer selectable (Y/N)
Stop on Blank Frames		customer selectable (Y/N)
Stop on Splices		customer selectable (Y/N)
<b>Other Notes:</b>		<b>AFD Rules of Operation</b>
		<p><b>THE DO'S:</b> Adhering to these requirements helps insure optimum performance of the AFD technology, <b>expected</b> to be 95+% accurate for frame line detection</p> <p>Minimum frame gap of approximately .050 required</p> <p>Opaque splices, put on film straight</p> <p>Splices not covering image area</p> <p>Normal exposures</p> <p>Frames of consistent length</p>
		<p><b>THE DO NOTS:</b> The following are some of the conditions that will cause the AFD technology to not automatically locate frames, thus requiring operator intervention and slowing productivity</p> <p>Butted or overlapping images</p> <p>Vignetted frames</p> <p>Exposure variations</p> <p>Splices covering part of image</p> <p>Frames with significant portions of dark content</p> <p>Camera cards and Chromes are not supported</p>
		<p><b>OTHER influencers</b></p> <p>Holes in the image area of the film may throw off the frame detection (holes along the edge such as those from a punching machine or notcher are not a problem)</p> <p>Twin checks may show up as splice if they are big enough</p>

Kodak and Kodak Professional are trademarks of Eastman Kodak Company. 5/04 PPI-XXX CAT XXX XXXX

